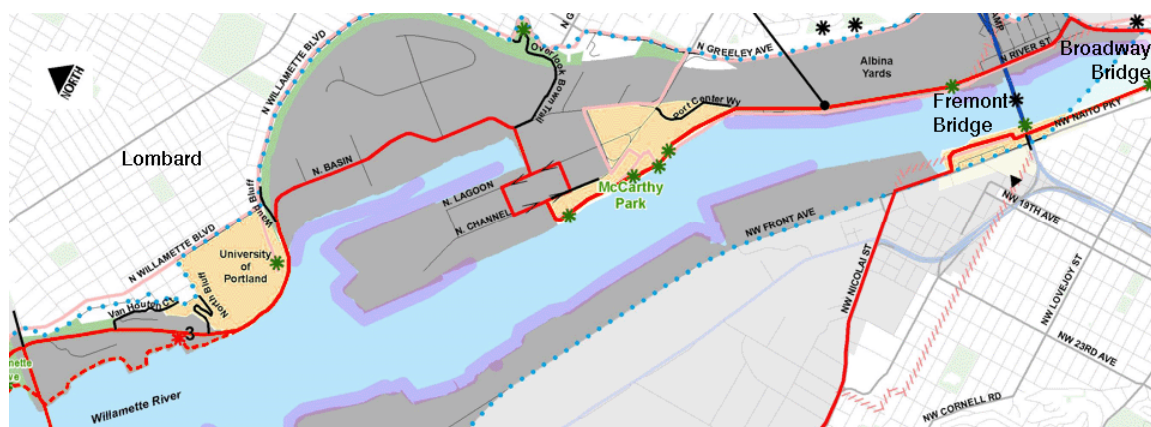


7: North Willamette Greenway Trail

Part of the Willamette River Greenway vision, this trail creates a new route from the Eastbank Esplanade north through Swan Island to the St. Johns. It will connect major employment centers, the Lewis and Clark Discovery Greenway Trail, and Marine Drive.

SITUATION

- Connects the central city to the St. Johns neighborhood
- Links to Peninsula Crossing and Eastbank Esplanade trails
- Runs along the Willamette waterfront



The proposed North Willamette Greenway Trail would run from the north end of the Eastbank Esplanade to Cathedral Park and the St. Johns Bridge. With a variety of trail access points, this would connect a huge cycling community in North Portland to the regional trail system; the trail would also link to the Peninsula Crossing trail.

The planned Greenway serves major employment destinations including Swan Island, the Lloyd District, and downtown Portland. In addition, its location along the Willamette River would provide residents and tourists with expanded access to the river, offering spectacular views of the city and the west hills.

PROBLEMS

- No existing off-street pathway
- Property acquisition difficult
- Active railroad in right of way

The North Willamette Greenway Trail does not exist. Completing the trail would have numerous complications including the logistics and cost behind acquiring property from a large number of landowners and the construction costs.

An active railroad line occupies much of the Willamette Greenway alignment. This line moves freight to and from industrial areas along the water such as Swan Island. While railroad lines are often opportunities to build trails, the use of land adjacent to rail lines must be negotiated with the railroad companies.

Funding is always a barrier. The trail will cost millions of dollars, and there is currently no funding secured for this trail. Other barriers include the industrial area, making access to the water difficult, and the steep cliff that connects the residential area to the waterfront property.

SOLUTIONS

- New multi-use pathway
- New trail access points
- Separate trail from trains

The City of Portland is completing North Willamette Greenway Trail plan that has identified potential trail alignments and solutions to conflicts that include location of the trail near and around industrial and commercial areas. The plan identifies the need for amenities, including rest and interpretive areas, and capitalizes on the views, wildlife, and industry of the area.



A first funding opportunity would be to acquire land with the proposed Metro Parks and Greenspaces bond measure. If passed, this bond could also be used to improve the access to the trail.

WHO TO CONTACT

Mel Huie, Metro Parks, Regional Trails Coordinator
(503) 757-1731

Gregg Everhart, City of Portland Parks and Trails Planner
(503) 823-6009

BTA Liaison

Emily Gardner, Metro Area Advocate
(503) 226-0676 x 11